

**Northeastern Pennsylvania  
Section**

**Mercedes-Benz Club of America**

[MBCA-NEPA.COM](http://MBCA-NEPA.COM)



**Shining Star  
Summer 2021 Newsletter**

***President's Message***

Hurray! Events are back open this summer for car clubs, with most car shows our club participates in being open: Deutsche Classic 7/10, Das Awkscht Fescht 8/8 (car registration must be postmarked by 7/1), New Hope Auto Show 8/15.

We are having our NEPA Picnic again this year Saturday 8/28 at Otto & Alice Christensen's garage with an a/c area for our gathering and eating, and we can view his (and many of our) dream work area and cars. We will have a popular vote MB car show. Join us for good food, good cars, and get a chance to catch up on old friends and meet new MB car enthusiasts.

We have our semi-annual election this year 10/7. Let me or a board member know if you are interested in volunteering for a position listed at the bottom of this newsletter or need information on a position. We are especially looking for a Membership Coordinator.

Additional information is listed in this newsletter on the above events.

I look forward to seeing you, at one or all the above events,

***Mike Ziegler***



---

## ***In this Issue:***

### **UpComing 2021 Events**

See Note 1 following 2021 events. We are hoping for a **Day Drive Volunteer** for our Fall Drive.

### **News including:**

- **Members' Corner**
- **New Members**
- **Technical Feature**
- **Mercedes-Benz Innovations -- The Supercharged Production Car**
- **Technical Questions answered**
- **Visit our Facebook Page**

### **Past Events:**

- **Day Drive with NNJ Section - May 15**
- **NNJ Section annual June Jamboree - June 19**

**On Going items including:** Airbag Recall, Personalized License Plates available, Associate Members emails, MBCA Car Flags for sale, Name Badges, Free Classified Ads, MBCA Northeastern PA Section Logo Clothing Available!, Survey Request, Membership Renewal Reminder, Pictures of events needed for our website, Request from the Advertising Coordinator, Technical Advisor for NEPA Section, Request from our Membership Coordinator, Event Attendance Book, Request from the Advertising Coordinator, Renew your Membership/Sign up new Members, the New Online Membership Brochure / Application, Mercedes Benz Channel on YouTube.com.

---

## Upcoming Events

---

### 2021 Events

---

**Jun 19 - 27 | Philadelphia Auto Show (postponed to January, 2022)**

---

**Sat, Jul 10 | 8AM-4PM | Deutsche Classic, Oley (NEPA/Keystone Section) \*More details below\***

---

**Sun, Aug 8 | 8AM-4PM | NEPA Das Awkscht Fescht, Macungie \*\*More details below\*\***

---

**Sun, Aug 15 | 8AM-4PM | New Hope Car Show (Del Val Section) \*\*\*More details below\*\*\***

---

**Sat, Aug 28 | 1PM-5PM | NEPA Summer Picnic - Alice & Otto's \*\*\*\*More detail below\*\*\*\***

---

**Tue, Sep 7 | 7PM-9PM | NEPA Board Meeting**

---

**Sat, Sep 11 | Regional, NNJ/SNJ Picnic, Bleiemaier's, Hopewell, NJ**

---

**Sun, Sep 12 | Radnor Hunt Concours d'Elegance Regional Event â€” new addition**

---

**Sun Sep 19 | NEPA Fall Drive**

---

**Sat, Oct 2 | NEPA Road Rally, Ron Gabel**

---

**Thu, Oct 7 | 6PM-7PM | NEPA Planning Meeting/ Election**

---

**Thu, Oct 7 | 8:45PM | NEPA Board Meeting**

---

**Nov 2 - 5 | Starfest, Hilton Head**

---

Nov 5 - 7. | | Omni Hilton head

---

TBD | | NEPA Tech Session, Masano's MB, Reading  
(Alice & Otto)

---

Tue, Dec 21 | 6PM/7PM | NEPA Christmas/Holiday Party (6P cocktails;  
7P dinner)

---

Sun ? | 8AM-12PM | NEPA Cars & Coffee Lehigh Valley, Bethlehem  
(John Sale)

---

**\* Note 1\*** NEPA's Driving Events Coordinator, Barry Brobst, cannot do this particular day drive. He has notes regarding one of the drives to Kaufman's Barbecue Ranch in Ono. If one of you members would like to step in and map out a scenic day drive either to Kaufman's or another particular place of interest, and optional restaurant following the event, please contact Mike Ziegler, NEPA President at [610-504-5470](tel:610-504-5470) or [mikez@zieglersrv.com](mailto:mikez@zieglersrv.com). You may also contact Barry Brobst for questions about the day drive, either the one he has mapped out to Kaufman's Barbecue Ranch or other day drives. Barry's contact info is [610-390-1878](tel:610-390-1878) or [bbrobst@ptd.net](mailto:bbrobst@ptd.net)

---

---

## Upcoming 2021 Events Details

---

**\* Deutsche Classic, Oley (NEPA/Keystone Section)**  
**Sat, Jul 10, 8AM-4PM Rain or Shine**

**Oley Fairgrounds**  
**26 Jefferson St**  
**Oley, PA 19547**

**Rain or shine; free parking**

<https://www.deutscheclassic.com>

Deutsche Classic is an all German automotive Car Show/Swap Meet event. In

addition to the swap meet, it includes a judged car & motorcycle show.

Delicious food is available all day. There will also be a tire toss contest, a kids' car hunt, hand-crafted awards. This is the 16th anniversary of the show. It's always a great time.

Some of the Classics include Audi, BMW, Mercedes, Opel, Porsche, VW, M/C, Microcar/Orphan

**Contact us at: 717-578-1463**

**email: [bug.world@yahoo.com](mailto:bug.world@yahoo.com)**

---

**\*\* Sun, Aug 8 | 8AM-4PM | NEPA Das Awkscht Fescht,  
Macungie  
Sunday, August 8  
8AM-4PM**

**Car registration deadline: July 1** (pre-registration only, [NO day of show registration](#)). [Registration information here.](#)

\$15 car registration includes up to 4 people (\$32 admission value & you don't have to walk from general parking)!

**ADMISSION (for those not pre-registering their car):** \$9 for adults, free for age 15 and under.

In its 58th annual season, Das Awkscht Fescht has been a summer tradition for all ages. Offering three fun-packed days in the great outdoors, itâ€™s a perfect way for families to celebrate summer. This year, we celebrate our 58th Annual Fescht, so come cruisinâ€™ through 42 acres of fun at the Fescht â€” and enjoy the great things classic summers are made of. Admission Includes all events, shows, and entertainment.

**ANTIQUE AUTO FLEA MARKET** Get a â€œpeachâ€ of a deal on parts and accessories for sale by more than 450 vendors. Plus, many vendors have antiques and collectibles as well, from toys and home decor to tools and beer signage.

**Car Corral** \$30 covers all 3 days, no pre-registration, first come first serve, includes admission for up to 4 people.

**Arts, Crafts & Antiques** area, featuring the handcrafted wares from over 100

vendors. From soaps, jewelry and clothing to home decor, pet items and food items, our arts & crafts vendors are sure to have something for everyone.

**KIDS'S SHOWS and ACTIVITIES** The fun begins at Kinderland and Crayola's® Corner. Jugglers, magicians, ventriloquists, clowns and a special creative activity and display center will educate and entertain young Fescht-goers for hours on end. A moon bounce has been added as well. (small fee may apply) The playground and swimming pool are open all weekend for everybody's enjoyment.

For even more refreshment, enjoy a dip in the **swimming pool** (open all 3 days, with lifeguard on duty).

**This year's Fescht offered a great line-up of bands, from country to rock & roll, and every day at the Fescht is a little different. With your paid admission at the gate, enjoy free live entertainment at our bandshell, near the food court.**

MBCA-NEPA coordinator at the event: Roger Egolf

Contact [Roger Egolf](#) for more information.

---

### **\*\*\* New Hope Auto Show**

**Sunday, August 15th**

**9 AM to 4 PM**

**Mercedes Benz:** All models thru 1995 are welcome to register in the show.

**General show vehicles:** \$25.00 each vehicle. [Register online.](#)

**Register early** - it's important that you get your registration form and payment in to the New Hope Automobile Show office as soon as possible.

**For cars wishing to register day of show, there is an additional \$5 fee.**

However we must warn you that because of our limited space, the popular divisions fill up quickly and day-of-show registrations can't be guaranteed.

**Day-of-Show registrations are not guaranteed to be judged.**

**Show car arrival time** - In order to qualify for judging all show cars must arrive at the show grounds by 10:30 AM. The show car gate opens at 7:30 AM.

Vehicles arriving after 10:00 AM may not be eligible for judging. Show vehicle entry gates will close at 11 AM. Spectator gates open at 9 AM.

**Display only vehicles.** If you do not wish to have your vehicle judged, you are welcome to show in the appropriate category. Please indicate on your registration form that you do not want to be judged. Simply check the "Do Not Judge" box. Vehicles must be in presentable original condition.

**If you are not entering a car, the admission to the show is \$10.00 per person.** General admission tickets are \$10.00 per person, children under 12 are free when accompanied by an adult. Active military and their families are free with ID.

The show is about fund-raising " for local community groups, charities, and education.

Mike Ziegler

---

**\*\*\*\* Summer Picnic at Alice & Otto's - NEPA Section Event  
Mohrsville, Pa  
August 28  
1PM-5PM**

We are having our annual picnic at Alice & Otto's house. Rain or shine. In the past we had this picnic at John and Arlene Frailey's house. They have a beautiful house surrounded by beautiful grounds. Unfortunately, we lost John Frailey in June 2020. Another member who will be greatly missed for his generosity and contribution to our club.

Alice & Otto have hosted the picnic twice in the past. The first time it was extremely hot and the cooks courageously cooked in the heat. The second year, Otto added a larger air conditioner to his garage, and then had a blackout. We decided this year to try to host it closer to September which will hopefully be cooler. Also, they still have air conditioning in the garage, and if it does rain you will not get wet. Address is 1685 Garfield Rd., Mohrsville, PA.

19541

We will have hamburgers and hotdogs and chicken and filet mignon **but we do need side dishes** such as macaroni salad, homemade potato salad, lettuce salad with dressing, fruit salad and deviled eggs and Lebanon bologna with cream cheese would be nice again and desserts.

We will also provide sodas and waters.

**RSVP to Debbie Egolf by August 16 if you are coming and if you are bringing something** to complement the food.

Once again we will have a popular car vote, and the winner will get a plaque. Thank you ever so much and I will be waiting for the RSVPs. Please let us know what MB car you anticipate bringing.

Thank you,

Debbie Egolf  
[egolf2000@yahoo.com](mailto:egolf2000@yahoo.com)  
Cell phone [610 751 7865](tel:6107517865)

---

Please check [MBCA-NEPA.COM](http://MBCA-NEPA.COM) for updates after this newsletter publication.

---

## News

---

### **Interim Membership Coordinator**

Christina Cimino has graciously offered to take over from Tom Lindeman as NEPA's Membership Coordinator in addition to her role as Social Media Coordinator.



The membership coordinator's role is basically to retain and increase membership in our club! (Phone calls, emails, etc.)

If you are interested in joining our team or would like more information, please contact Mike Ziegler at 610-504-5370 or email at [mikez@zieglersrv.com](mailto:mikez@zieglersrv.com).

We are a fun group and prior to COVID, had wonderful dinner meetings, now via ZOOM, but we look forward to meeting in person again in the very near future.

---

## Members' Corner

---

### Meet our new members:

Ann Cooke of Norhampton PA  
Kevin Geklinsky of Easton, PA  
Joseph Lentini of Scranton, PA  
Jason Manns of Pocono Pines, PA  
Rick Mooney of Mountain Top, PA  
Shane Ulrich of Selinsgrove, PA

Please note: if your associate member would like to receive a separate copy of our newsletter and eBlasts, please send their email address to our Newsletter Editor, Alice Christensen ([achristensen@comcast.net](mailto:achristensen@comcast.net))

---

## Technical Feature

### **Mercedes-Benz Innovations -- The Supercharged Production Car**

by John Sale

I have been thinking over the last couple of months, about what would be an interesting technical article for the newsletter. What I kept seeing in various car magazines and internet videos was a fascination with the Mercedes-Benz supercharged AMG engine. I am currently watching a YouTube video series on a complete rebuild of an AMG supercharged V-12 engine. This led me to writing this article about the introduction and production of the first Mercedes-Benz supercharged production car.

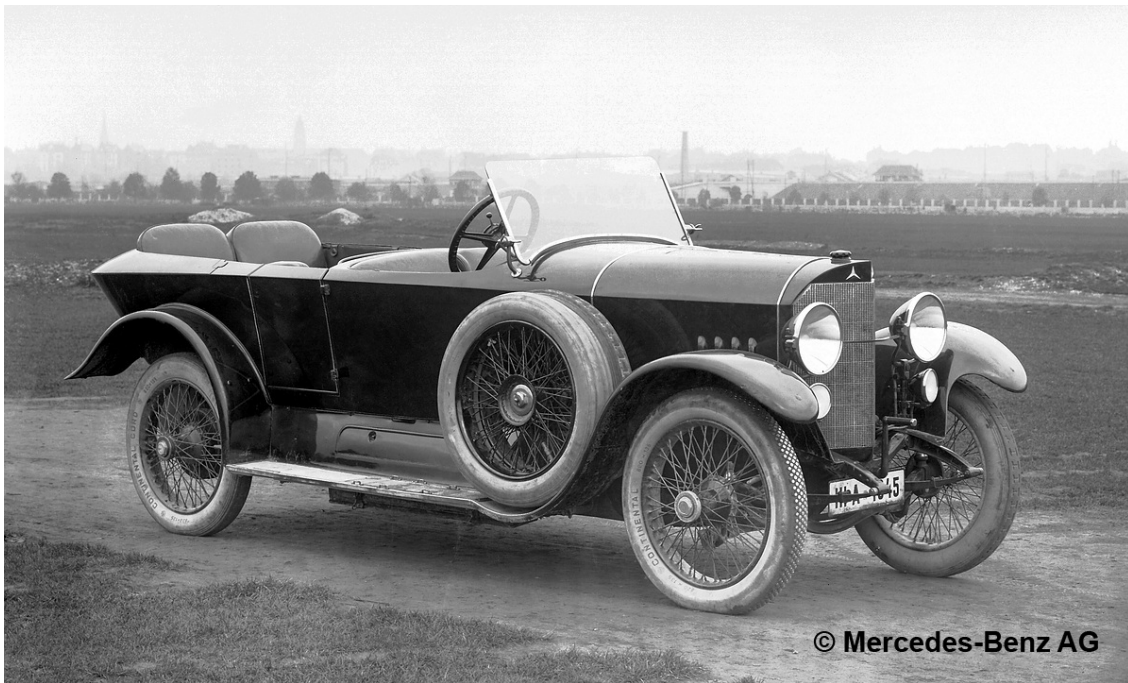
The world's first functional, tested engine supercharger was made by Dugald Clerk, who used it for the first two-stroke engine in 1878. Gottlieb Daimler received a German patent for supercharging an internal combustion engine in 1885. Louis Renault patented a centrifugal supercharger in France in 1902. An early supercharged race car was built by Lee Chadwick of Pottstown, Pennsylvania in 1908 which reportedly reached a speed of 100 mph (160 km/h).

The first Mercedes supercharger was developed in 1921 by a Daimler-Benz team with assistance from Ferdinand Porsche. Mercedes became the first manufacturer to install superchargers on some production models. The designation "K" on Mercedes usually means "Kurz", or short, but can mean "Kompressor". Kompressor is a marketing name for forced induction (supercharged) Mercedes-Benz engines. The term is not widely used by other motor manufacturers.

A compressor driven by the engine noticeably increased the power of the Mercedes engine by pressurizing the fuel-air mixture. The era of the late 1920s was dominated by the supercharged Mercedes-Benz sports cars, which won all major events.

### **1921-1932: The Supercharger Era**

The supercharger era began when Daimler-Motoren-Gesellschaft (DMG) presented the world's first supercharged passenger car at the Berlin Motor Show in September 1921. The four-cylinder 6/20 hp and 10/35 hp Mercedes engines were supplied with compressed air from a double-vane Roots blower for improving cylinder charge and thereby boosting output.



6/25/40 hp Mercedes Phaeton, built from 1921 to 1924.

The world's first series-produced cars with superchargers were the Mercedes 6/25/40 hp and the Mercedes 10/40/65 hp. Both models were introduced in 1923 and had Roots superchargers. They were distinguished as "Kompressor" models, the origin of the Mercedes-Benz badging that continues today. Their engines incorporated V-shaped overhead valves, a vertical shaft as well as single steel cylinders, arranged in a single block and surrounded by a welded outer steel casing. These high-performance engines were designed by Paul Daimler based on the model of aero engines dating from the First World War – the aero engines that also gave rise to the technology of mechanical charging using a compressor.

The amalgamation of Daimler-Motoren-Gesellschaft and Benz & Cie in 1926 to form Daimler Benz AG also merged the successful motor sport activities of the two brands.

### **1926: Mercedes-Benz 24/100/140 hp model K**

This supercharged touring car's 6.2-liter six-cylinder engine propelled it to a top speed of 155 km/h, or about 96 mph. The "K" stood for kurz or "short," as the car had a shortened version of the regular 24/100/140 hp chassis. Mercedes-Benz introduced increasingly swift S, SS, SSK, and SSKL models in the next few years.

### **1928: The Arrival of a Legend**

The 1928 SSK ("super-sports short" in German) was powered by a

supercharged 7.1-liter engine. Over the SS model, the SSK added power and shortened the chassis from 133.9 inches on the SS to just 116.1 inches on the SSK.



1928 Mercedes-Benz SSK

Making things more exciting in the cockpit, the Kompressor supercharger would only activate when the accelerator pedal was jammed to the floor. Private customers of the SSK could order special racing Kompressor devices and camshafts.

Soon, the SSK was winning races everywhere. In 1929, SSKs won a Prague mountain race as well as the International Tourist Trophy in Ireland. At the Nürburgring, the SSK won the Grand Prix des Nations in the class for the category of sports cars with over three liters of displacement. A year later, an SSK was the winner of the European sports car hill climb.

The crowning glory followed in 1931 in the grueling Mille Miglia, where Rudolf Caracciola won a spectacular victory piloting the short-wheelbase SSK model. For 1931, an SSKL model was created - a vehicle meant only for racing - and this Mercedes-Benz won the Italian Mille Miglia long-distance race. Overall, only 33 SSK and SSKL models were made from 1928 to 1932, but the impression those cars left is huge.

Like the SLS AMG model today, many prospective buyers of the SSK model wanted the high-performance Mercedes-Benz offered, but not in a race-ready package. That is why some SSKs were ordered with a cabriolet body, something that is still in the cards for the modern SLS AMG. Just as Mercedes-Benz was happy to customize your SSK in 1928, AMG will be happy to customize the performance of your SLS AMG today.



Rudolf Caracciola, 1938

---

## Get Answers to Your Technical Questions

If you have a technical question (s), submit them to NEPA Newsletter Editor [Alice Christensen](#) who will forward them to Walter Piekarski, our Technical Advisor for possible publishing in a future newsletter.

---

**[Join us on Facebook](#)**



Please visit and join our Facebook page. Once accepted you can post pictures of your cars, join member discussions on various Mercedes topics, and ask questions.

Click here: <https://www.facebook.com/groups/MercedesBenzNEPA/>

---

## Past Events

---

### **Day Drive with NNJ May 15**

We were fortunate that our Spring Day Drive was scheduled the same day as the Northern New Jersey MBCA Section scheduled their Spring Rallye, and that they invited us to join them. Some of our NEPA members met in Allentown to caravan to the starting point at the VFW in Morris Plains NJ. There was a great turnout for the Rallye, probably because we were excited to be able to gather again from a long hiatus. We enjoyed 2 hours of back roads in Morris and Hunterdon Counties with the lovely farms and beautiful homes. The Rallye ended at Al Frescos in Flemington NJ where we filled the private room and had a delightful lunch. Hope you can join us for the Fall Day Drive 9/19 and the Road Rally 10/2.

Mike Ziegler



Top right: John & Denise Sale on either side of his Dark Blue CLK320; to the left in the same photo is Nancy Ziegler to the left of our 2011 E350 Cabriolet. Bottom right: Center at the table is Christina with her fiance. Photo bottom left: Marina and John Bleiemeier.

---

## June 19, 2021 NNJS June Jamboree

The Northern New Jersey section of MBCA had their 57h annual June Jamboree at the Park Avenue Club in Florham Park, NJ on Saturday, June 19.

The event was very well attended, with all 22 tables in the dining room filled.

The cars were broken down into two categories -- Concours (judged by a team of judges according to MBCA guidelines) and Popular (voted by those in attendance)

When the judging was completed, we entered the dining room for lunch. Lunch was a sumptuous buffet-style with wait staff serving the food from the buffet section.

While the members ate, the scorekeepers tallied up the results.

There were many Mercedes-themed door prizes, and a good many trophies to the winners in all categories.

Kudos to the NNJS section for an amazingly run event.

Alice Christensen  
Newsletter Editor



Upper left: John Sale, NEPA's Advertising Coordinator, won second place in the "Popular Vote Old Sport Class". Top right is John's car between 2 competitors, a 2004 MB CLK 320 cabriolet with 48,300 miles.

Bottom left: NEPA member, Otto Christensen (very left in the photo), won 1st place in the "Popular Vote Modern Class". Bottom right: is Otto's 2015 C63 AMG 507 with the hood up.



### **Airbag Recall**

At Mercedes-Benz, our highest priority is keeping you safe. So we'd like to share some important information about a recall involving Takata frontal airbags used in many vehicles, including certain Mercedes-Benz models. This safety recall is a result of inflators that may improperly deploy with excessive force in the event of a crash. Takata and other inflator suppliers are working with the U.S. Department of Transportation National Highway Traffic Safety Administration (NHTSA) to coordinate availability of replacement airbags as soon as possible. To learn more about the Takata Recall, including information on free airbag replacement, visit [mbusa.com/mercedes/recall](http://mbusa.com/mercedes/recall).

---

### **Personalized License Plates now Available from DMV**

The Pennsylvania license plates with the Mercedes-Benz Club of America logo on them are available again through our Keystone Section. They are available either sequence numbered, or customized with up to 5 letter/numbers for an additional one-time fee. Two of our members customized plates are pictured on the top-right corner of our [MBCA-NEPA.com](http://MBCA-NEPA.com) web site. The link to the directions and forms to fill out can be found here:

<https://keystone.mbca.org/pa-license-plate>



### **Associate Members emails:**

We would like to have each member who has a spouse or partner, to list that person at no additional cost, as an associate member, and to list their email address so they also get the newsletters and other updates directly. You can do that by logging into the [MBCA.org](http://MBCA.org) web site (also notify editor if you want the

associate member to receive emailed newsletters and eBlasts), or email the information to [Newsletter Editor](#) along with their phone number (or let him know that the associate member's phone number is the same as the member's phone number).

---

### **MBCA Car Flags for sale:**

Blue car flags with the MBCA logo on both sides are available. They fit on the side windows. They are good for any MBCA event to show your support of our club. They are available from Debbie Egolf or Mike Ziegler at most events. Preferably, email Debbie at [egolf2000@yahoo.com](mailto:egolf2000@yahoo.com) so she knows to give it to you at the event you are going to. There is a donation of \$5 requested preferably by check to MBCA-NEPA. Get one for each of your MB cars and keep it in the car, so you don't have to remember to take it with you on an event.

---

### **Name Badges:**

Please wear your name badge to all events. If you (a NEPA member or associate member) never got a badge, your NEPA section will pay \$6 and you pay the other \$6 and it will be sent to you in the mail. If you lost your badge or would like one to keep in your other MB, they are \$12. Contact me for name badges.

[Mike Ziegler](#)

---

### **Free classified ads:**

As a NEPA member benefit, if you have a Mercedes-Benz car or part for sale or wanted and are a member of the NEPA Section, you may list one ad for free per issue (limited to 20 words plus your contact information, then 20 cents per word) in the NEPA newsletter. One free picture will also be permitted if picture is emailed (\$50 if submitting a photo). Free ads may not be listed in printed copies (\$75 to ensure it will be in the printed newsletter). Submit ads by email

to the newsletter editor. If you want your classified ad in another issue, you must resubmit your free ad for each newsletter. Members who are in the business of selling Mercedes Benz cars or parts may list one free classified ad per year. For paid ads email the newsletter editor or president with your request.

Personal non-NEPA member classified ads are \$25 for up to 20 words, then 20 cents per word (picture rules same as for NEPA members).

The deadline to submit classified ads are June 1st for the Summer issue, September 1st for Fall issue, December 1st for the Winter issue, and March 1st for the Spring issue.

Mike Ziegler

---

### **MBCA Northeastern PA Section Logo Clothing Available!**

A diverse line of quality men's and women's Lands' End™ activewear, outerwear, shirts, sweaters and other items are available with our MBCA Section logo.

Visit the Lands' End website at <http://business.landsend.com> to browse the catalog or email them at [businessoutfitters@landsend.com](mailto:businessoutfitters@landsend.com).

You can also connect by telephone at [\(800\) 587-1541](tel:8005871541).

*Be sure to indicate that you are a member of the **MBCA Northeastern PA Section** and wish to have that logo placed on your selected items.*

---

### **Survey Request:**

In an effort to keep the NEPA section interesting and relevant to all of our members, we have included a link to a survey. If you have not previously filled out the survey, would you please fill out this short 6 question survey regarding your preferences by clicking the below link. Thank you!

[Click here to complete short survey.](#)

---

### **Membership Renewal Reminders**

Most of our members utilize the MBCA website to renew their membership. It is important when you do this to also keep your contact information up to date. Remember that you may also add an Associate Member at no cost. This could be your spouse, another family member, or other significant person.

The MBCA National Office also provides several renewal reminders by contacting members approximately 90 days before the renewal date, the date of renewal and 30 days after the passing of the renewal date.

Keep our membership numbers and Club strong and enjoy the benefits and value of membership by renewing promptly. Please contact me if you have any questions or issues.

Mike Ziegler  
MBCA NEPA Section  
[mikez@zieglersrv.com](mailto:mikez@zieglersrv.com)

---

### **Pictures of events needed for our website:**

When you take pictures at our club events, please email the ones you would like to see on our website to Debra Kropf [debra@kropf.com](mailto:debra@kropf.com) for possible inclusion on our website.

---

### **Technical Advisor Position for NEPA Section:**

**Member benefit** to our NEPA Section: Walter Piekarski, owner of Walter's™ Foreign Car Service, has volunteered to be our Technical Advisor. Walter, along with his wife Jolanta (our NEPA Treasurer) are founding NEPA Section

members. He works on most Mercedes-Benz cars. He has worked on Mercedes-Benz cars for over 50 years which makes him very knowledgeable on the older Mercedes-Benz cars too. Call him at his shop during business hours for free technical help with your Mercedes-Benz. If after talking with him, you would prefer him to do the repair, he will offer a 10% discount on labor to Mercedes-Benz Club of America members. Make sure you identify yourself as a member of the Mercedes-Benz Club when you call.

The best time to reach Walter is Mon-Thu 8:30 AM-noon, 1 PM - 4 PM at [610-865-4255](tel:610-865-4255) (he may have to call you back). You can visit his web site at: [www.WaltersMercedesServices.com](http://www.WaltersMercedesServices.com)

Mike Ziegler

---

### **Keeping Your Membership Current**

Keeping your contact information current helps the Club to provide timely and accurate information regarding events and activities.

There is a definite need to provide the following bits of information to help the Club for event planning purposes:

- The year, make, and model of your car;
- Associate Member—All Members can add one Associate Member to their membership AT NO COST! We would just need you to provide that person's First Name, Last Name and e-mail address

Double-check for accuracy---

Your current address, telephone number and e-mail address. This can be accomplished by providing the information to me, Alice Christensen, Newsletter Editor at [achristensen@comcast.net](mailto:achristensen@comcast.net) or by phoning me at 610-926-8392 and I will be happy to assist!

Also, If your associate member is not currently receiving a separate copy of our newsletter and would like to receive a separate copy, please send their email address to our Newsletter Editor, Alice Christensen ([achristensen@comcast.net](mailto:achristensen@comcast.net))

---

## Event Attendance Book:

Members who attend NEPA events are requested to sign the Event Attendance Book, and if you brought your Mercedes-Benz to the event, list the year, make, and model brought. If you don't see the book at the event, tell Debbie Egolf or one of the other officers (with gold colored name badges) that you would like to sign the Event Attendance Book.

---

## Request From The Advertising Coordinator

Do you have a favorite Mercedes-Benz service center or equipment supplier? Please send me their contact information (name, address, telephone number, and/or email address). I will contact them to see if we can get them involved with NEPA advertising and activities.



---

## Renew Your Membership/Sign up New Members

Current members may **renew their membership**-either online through the MBCA.org portal or by calling MBCA National directly at 800-637-2360. There are annual renewal options, as well as multi-year options available. **Don't let your membership lapse so you can continue to enjoy the benefits of being a member of the MBCA!!!**

**Current Members**-Remember that when you refer a potential member for membership and the person joins the MBCA, ***you receive an additional free month of membership for each new member you refer.*** There are probably

family members, co-workers, and other social friends who are enjoying the Mercedes Benz driving experience. Encourage them to join our Club and Section to enjoy the full complement of **fun driving and social activities** our Section plans each year!

---

## **The New Online Membership Brochure / Application**

The newly redesigned two-page Membership Application has been updated with a cover page highlighting MBCA Membership Roadmap of Benefits, has links to our Social Media Pages and a completely redesigned fillable membership application. This new condensed version of the traditional application reduces printing costs while still providing important information about the club and benefits of being an MBCA member.

This new two-sided online brochure can be locally printed, reducing the expense of printing and mailing the traditional tri-fold application. Sections that need applications immediately for a recruiting event can download the PDF and have the new Brochure/Application printed locally on card stock.

The new Brochure / Fillable Application can be viewed or downloaded by clicking on the link or the image below:

[https://www.mbca.org/sites/default/files/reference/MBCA\\_online\\_Brochure2021\\_FORM.pdf](https://www.mbca.org/sites/default/files/reference/MBCA_online_Brochure2021_FORM.pdf)

---

## **Mercedes Benz Channel on You-Tube**

Click on the link in the heading to browse Mercedes Benz Channel on You-Tube.

---



## Why Buy From Tom Masano Inc.?

### **WE ARE READING AND BERKS COUNTY, PA'S FACTORY AUTHORIZED SOURCE FOR NEW AND CERTIFIED PRE-OWNED MERCEDES-BENZ & SPRINTER VANS.**

We also offer a vast selection of Quality Pre-Owned CARS, TRUCKS AND SUV'S – something for everyone! Our constantly monitored, market based, "one easy price" shopping makes buying or leasing from us a value second to none! At Tom Masano, Inc. - a Mercedes-Benz dealer on Lancaster Avenue, your purchase of a New or Certified Preowned Mercedes-Benz includes at no additional charge: • lifetime annual PA inspection • no charge MB loaner cars with service appointment • valet service to your home or office • complimentary hand car wash with service visit & more.

**Just Completed in 2019** - An all new state of the art Mercedes-Benz showroom, service and parts facility built to MBUSA's Auto Haus "Black" architectural requirements accentuating a beautiful showroom and drive thru service plus so much more!

**WE STRIVE EVERY DAY TO GIVE YOU THE BEST IN AN AUTOMOTIVE PURCHASE AND SERVICE EXPERIENCE!**  
The best people giving you the very best in an automotive experience – MB Certified Sales, Service, Parts & Body shop. Reading and Berks County, PA's factory authorized MB retailer since 1969.

**WE HONOR THE MBCA "Member in Good Standing" \$500 INCENTIVE (where applicable)  
PLUS TAKE 10% OFF YOUR ENTIRE SERVICE INVOICE WHEN YOU MENTION THIS AD!**

Mercedes-Benz

**Tom Masano**

Masano.MercedesDealer.com | 1.877.TomMasano | 1.877.866.6272 | 815 Lancaster Ave | Reading, PA 19607





**EUROPEAN AUTOMOTIVE  
SALES & SERVICE**



EXCEPTIONAL QUALITY  
UNMATCHED SERVICE  
PERSONAL TOUCH

**Peace of Mind Benefits include:**

- Transparency-We'll explain what's needed and give you options in plain English
- Amazing 36 month/36,000 mile nationwide warranty
- We use the same tools as the dealer to service your vehicle including XENTRY diagnostics
- Factory scheduled maintenance-To protect your investment
- Jeff Diehl, our Mercedes Master Guild Recognized Technician, has 38 years of experience
- Family owned with 24/7 access to Tom, the proud owner
- No surprises-You stay in control
- Complimentary loaners/shuttle service

Ask about our  
**"Get Acquainted Offer"**  
for your first visit

5530 Crackersport Rd, Allentown, PA / 610.395.8433 / [schearers.com](http://schearers.com)





**HAGERTY** Let's Drive Together

877-922-9701 | [hagerty.com](http://hagerty.com)

---



**LIKE** us on facebook!

*This is your forum to keep in touch and share information.*

[www.facebook.com/groups/MercedesBenzNEPA](http://www.facebook.com/groups/MercedesBenzNEPA)

---



As a Mercedes Benz owner, you experience the best automobile in the world to drive.  
Now experience the best service for your Mercedes Benz by Star Service Center.

**(610) 437-3374** [starservicecentermb.com](http://starservicecentermb.com) 738 N. Graham St. Allentown

---

Mike Ziegler | President | [610-504-5370](tel:610-504-5370) | [mikez@zieglersrv.com](mailto:mikez@zieglersrv.com)  
Roger Egolf | Vice President | [610-393-2688](tel:610-393-2688) | [rae4@psu.edu](mailto:rae4@psu.edu)  
Debbie Egolf | Secretary | [610-751-7685](tel:610-751-7685) | [egolf2000@yahoo.com](mailto:egolf2000@yahoo.com)

Jolanta Piekarski | Treasurer | [jolantarentals@aol.com](mailto:jolantarentals@aol.com)

Barry Brobst | Driving Events Coordinator | 610-390-1878 | [bbrobst@ptd.net](mailto:bbrobst@ptd.net)

Ron Gabel | Rally Master | [rggabel@ptd.net](mailto:rggabel@ptd.net)

Alice Christensen | MBCA-NEPA Newsletter/eBlast Editor | [achristensen@comcast.net](mailto:achristensen@comcast.net)

Brett Kropf | Webmaster | [Brett@Kropf.com](mailto:Brett@Kropf.com)

Debra Kropf | IT Specialist | [Debra@Kropf.com](mailto:Debra@Kropf.com)

Walter Piekarski | Technical Advisor | 610-865-4255 | [www.WaltersMercedesServices.com](http://www.WaltersMercedesServices.com)

John Sale | Advertising Coordinator | (610) 442-5930 | [jws3@lehigh.edu](mailto:jws3@lehigh.edu)

Christina Cimino | Social Media Coordinator | [ChristinaCimino16@gmail.com](mailto:ChristinaCimino16@gmail.com)

Bill Fisher | Regional Director - Mid Atlantic | 609-221-2633 | [billfisher\\_560sl@yahoo.com](mailto:billfisher_560sl@yahoo.com)

*Copyright © 2021 Mercedes-Benz Club of America Northeastern Pennsylvania Section, All rights reserved.*