



Shining Star

Winter 2012

Mercedes-Benz Club of America | Northeastern Pennsylvania Section Volume 17 Issue 4

Warning: Don't Use E15 Gasoline in Your Mercedes

News reports claim that at least 10 car companies, including Mercedes-Benz, have announced that they **will NOT cover any warranty claims of damage due to the use of E15 gasoline.**

(Editor's Note: I have been unable to find any "official" notice from MB concerning E15 gasoline.)

The American Automobile Association (AAA) has issued warnings to its members against use of E15 for any vehicles older than 2012 and not advertised by their manufacturer as being "flexible fuel" models. E15 is **currently available only at 10 gas stations in Kansas, Nebraska and Iowa.**

Pushed by ethanol producers, the EPA approved the use of E15—a 15% ethanol-gasoline blend—in June over objections from automakers and the oil industry.

Almost all gasoline sold in the United States is currently E10 (90% gasoline and 10% ethanol). E15 has only 85% gasoline and 15% ethanol. Apparently the mix can cause some severe corrosion problems in fuel lines and emission systems, and can cause rapid deterioration of gaskets.

The problem apparently stems primarily from "phase separation" of the fuel: the ethanol is heavier than the gasoline and settles at the bottom of a fuel tank. That causes the engine to sometimes run entirely on ethanol, and sometimes entirely on gasoline.

The ethanol requires special handling. It is delivered to gas stations and then stored in special stainless steel tanks, because ethanol is extremely corrosive. It is mixed at the pump with regular gasoline.

You can see the AAA report online: <http://newsroom.aaa.com/2012/12/suspend-sale-of-e15-gasoline/>

There is a video available online about the AAA report: <http://video.foxbusiness.com/v/2000862202001/warnings-not-to-use-e15-gas-in-your-car/>



Welcome, New Members

- Anthony Ansaldo, Reading
- Sherry Walsh, Carbondale

Do you know of anyone who might be interested in becoming a member of the Mercedes-Benz Club? You can get brochures and hang tags by contacting our club (president@mbca-nepa.org) or have them call the national club toll-free at 1-800-637-2360 to join.

Club Events Planned for 2013

Thanks to the Club's Planning Group, we have a varied and entertaining docket for the upcoming year. Several major events, including driving events, will be posted in the upcoming months. Please note that **dates and times are subject to change.** We will provide more details closer to the event on the club website and via the MailChimp email delivery system.

January

26th (Saturday)—Philadelphia Auto Show—Recognized by the industry as one of the top car shows in the country, the Philadelphia Auto Show displays more than 700 vehicles from a variety of manufacturers. We've **hired a van** to take members from the



Lehigh Valley to the show. Thanks to the generosity of the Southern New Jersey Section, MBCA-NEPA members will get **early entrance to the show and other perks.** Details elsewhere in this issue.

February

Date to be Announced—Grand Prix Concours Preparation—Ever wonder what separates the also-rans from the winners of concours events? This company does concours-level detailing for events such as the Scottsdale Auctions, Amelia Island, The Quail & Pebble Beach, and the Ferrari Club of America events.



Tim McNair, of Grand Prix, will show work in progress on a Gullwing 300SL in Lahaska, Bucks County.

23rd (Saturday)—America on Wheels, Allentown. The elaborate galleries of America On Wheels feature the vehicles that put our nation, literally, on the road to international leadership in automotive transportation. Special guided tour for Mercedes Club Members.



March

7th (Thursday), 6:30 p.m.—Dinner & Talk: Life on the Other Side of the Counter with Neil Dancho of Star Service Center. Things you need to know when purchasing a Mercedes; what the guy behind the service counter is thinking, but might not say to you. At the Borderline Restaurant, Pennsylvania Ave., Bethlehem.

23rd (Saturday), 6 p.m.—Spring Dinner at Annabella's Restaurant, Bethlehem. Featuring a presentation by car aficionado and raconteur John Bleimaier on last summer's Pebble Beach Concours. Always a good time with great conversation and food.

May

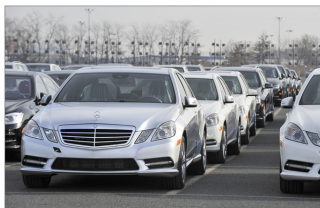
18th (Saturday)—Carlisle Car Show. Come out and support the Keystone Section by putting your Benz in the show.

June

8th (Saturday)—June Jamboree at Mercedes-Benz USA Headquarters in Montvale, NJ. This is the 50th annual Jamboree, the longest-running event in the history of the MBCA. Members get the royal treatment from the Mercedes American mother-ship. It's sponsored by the Northern New Jersey Section. You can enter your Benz in either the popular or concours competitions. Every Mercedes enthusiast should attend this event at least once.



15th (Saturday)—Mercedes-Benz at the Port of Baltimore. Larry Taylor, president of the Keystone Section, has invited our section to this **private tour** (the public is



NOT invited) of Mercedes' largest U.S. entry point, which processes 125,000 cars annually for delivery to 350 dealerships from Virginia to

Maine and to as far west as Colorado. It requires brute strength, a nimble workforce and a game plan worthy of an NFL team and you now have an opportunity to see how the Mercedes team can clean and inspect a car, fix problems, add accessories and send it on its way in as little as 24 hours.

29th (Saturday), 1 p.m.—The Club's Annual Picnic. This year, it will be held at Roger & Debbie Ego's home. Will include a tech session with the Wheel Collision Center, the area's biggest wheel repair shop.

July

13th (Saturday)—Deutsche Classic, to be held this year in Oley, PA. Last year, 30+ Mercedes from area sections were on display.

August

4th (Sunday)—Das Awkscht Fescht at Macungie Memorial Borough Park, Macungie, Pa.

10th (Saturday), 1 p.m.—Mercedes at the Marina, Jolanta & Walter Piekarski's annual outing and picnic.

September

21st (Saturday)—Date tentative—Annual Regional Picnic at John Bleimaier's Falkenhurst.

December

7th (Saturday)—Club Holiday Dinner



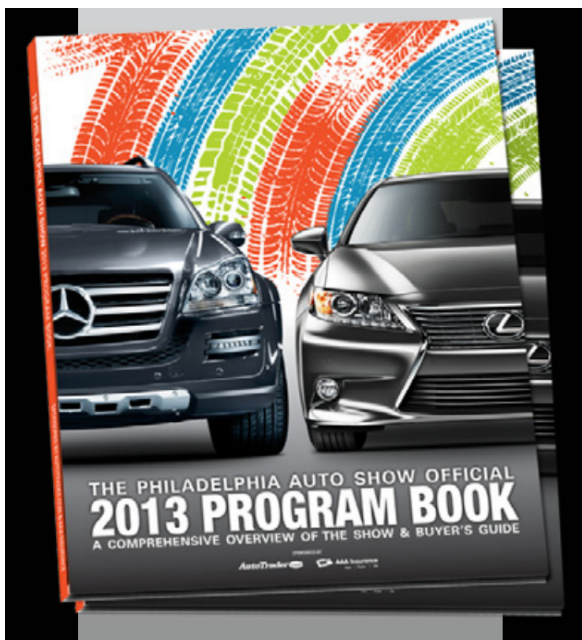
Mercedes-Benz Club of America
Northeastern Pennsylvania Section
 406 N. Pine Top Circle
 Bethlehem, PA 18017



Join Us at the
Philadelphia Auto Show on Saturday,
January 26th.

We're hiring a van, so you don't have to deal with center city parking and traffic!

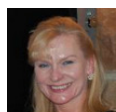
See below for details...



Join the Mercedes Club at the Philadelphia Auto Show Saturday, January 26

The Southern New Jersey Section has invited us to join them for their annual trek to the area's largest auto show. **Now available to you without the hassle of driving and parking in Philly.**

- ◆ **How We'll Get There:** The club is **hiring a van** to take us from Bethlehem to the Auto Show and back.
- ◆ **Cost: \$20 / person** (\$15 for the van + \$5 donation to Children's Hospital of Philadelphia).
- ◆ **Meet:** at the Bethlehem Wegmans Parking Lot at 6:15 a.m.
- ◆ **Arrive:** at the Auto Show at 7:45. You may also drive yourself and meet us there.
- ◆ **For Club Members Only:** Exclusive access to the Mercedes Pavilion at 8 a.m., an hour before the show opens for the day.
- ◆ **Reservations Required:** Contact Barbara Fiedler (610-216-0505 or president@mbca-nepa.org) **BEFORE Saturday, January 19th.**



President's Corner:

Events For You 2013

By Barbara Martin Fiedler, *MBCA-NEPA President*

You can see the events that have been fully worked out on the flip side of this page. I'm using this space to tell you about events that are still in the works:

- **The Rich Auto Museum** near Scranton. This private collection is amazing and rarely seen by the public. The founder's heirs have graciously invited the club to take a tour.
- **The Happy Memories Museum** in Allentown, which is the third largest collection of nickelodeons in the U.S. Several members have seen this collection and recommend it highly.
- **Manhattan Trip**, including Mercedes' flagship 40,000 square foot dealership and the Intrepid Sea-Air-Space Museum. Our last visit, in 2011, brought high praise from club attendees for a great day in the big city.
- **Quarterly Drives**, including Diners, Drive-Ins & Dives tours. Drives will be on either Saturday or Sunday this year, depending on the event.
- **Road Rally**, to be held in the Lehigh Valley on a course designed by member Ron Gabel. For those of you who like the challenge of a

game with the joy of driving, this is for you.

- **MBUSA Facility** private tour, probably the Robinsville, NJ, parts distribution center. Wonder where all of those parts your car has needed over the years come from? Like all things Mercedes, parts distribution center is a well-engineered masterpiece.
- **QVC and Winterthur** tour. Even if you're not a shopaholic, you can marvel at the merchandising machine that is QVC. We're planning to top it off with a special tour of Winterthur, the premier museum of American decorative arts, reflecting both early America and the du Pont family's life here. Its 60-acre naturalistic garden is among the country's best, and its research library serves scholars from around the world.

If you have any ideas for events, please let me know. We will be providing details for each event as the dates get closer both on the web and through our MailChimp mass emails. Send me your email address if you haven't been receiving emails from us.

Get the latest information about the Mercedes-Benz Club of America, Northeastern Pennsylvania Section at our website:

mbca-nepa.org

Also, **make sure we have your email address** on file so that we may send you updates on club activities. Contact Barbara Fiedler at president@mbca-nepa.org or **610-216-0505**.